

**VISCID FLOW** Pumps & Systems



# VISCID FLOW Pumps & systems About us:

\* **VISCID FLOW PUMPS AND SYSTEMS** , based in the industrial city of Coimbatore, India, our infrastructure is equipped with all modern machines and technologies that are required for undertaking trouble free production endeavors. Specialized in positive displacement pumps, our dedication is to provide the best pumping solutions for critical industrial applications. For managing this wide spread infrastructure, we have employed a dexterous team of professionals. These professionals hold rich expertise in different areas such as designing, development and production. Further, our experts work in close coordination with the clients so as to know and understand their exact requirements. Thereafter, we incorporate the detailed specifications of the clients while manufacturing each product. Moreover, all the above-stated factors help us in creating a recommendable position in the industry.

\* **OUR MISSION:** Here at VISCID FLOW , our mission is to be a professional fluid systems company by providing exceptional customer service and quality products to a wide range of customers through knowledgeable and dedicated employees.

\* **OUR VISION:** Our vision is to become the leader in the industry when it comes to fluid management solutions. We aspire to be the preferred choice for supplying fluid handling pumps and related services to our customers. At the same time we also aim to create a healthy working environment for our workforce and thus, become a preferred choice for them as well.

## \* **CUSTOMER RELATIONSHIP MANAGEMENT:**

\* “our business is about technology, yes . but it's also about operations and customer relationships.



# USER INDUSTRIES - PUMPING SOLUTIONS

## FOOD & PHARMA

Transfer of media in the food and pharma industries requires a very precise operation. In order to assist you in this fairly complex operation we have a range of pumps and systems which can pump the media at regulated temperature and flow rate, prevent deformation of the solids in suspension in the fluid and maintain the highest degree of hygiene. The VFF, VFW, VFBB, VFV series of pumps provide high efficiency in these operations.

## BREWERIES & WINERIES

In breweries, for handling media such as thick mesh, heavy dejuiced red wine mesh, thick yeast, wine etc. VISCID FLOW provides solutions which have very low operating costs and easy maintenance. Pump selection is based on the needs and application. The VFS, VFF, VFW, VFM series are some of the commonly used pumps in breweries

## SUGAR & DISTILLERIES

VISCID FLOW provides high precision pumps for pumping fluids such as raw juice, magma, massecuite etc. in sugar industry and molasses, fermenter wash, spent wash etc. in distilleries. These pumps transfer the media without crushing the sugar crystals thereby providing a high rate of crystallisation. VISCID FLOW VFS, VFM, VFW, VFV are generally used in sugar industries.

## PROCESS & CHEMICAL

Fluids in the process and chemical industries have special characteristics which require special solutions. Here at VISCID FLOW we have the products to pump highly corrosive, abrasive, thermic fluids, fluids with solids in suspension etc. at the required pressure and flow rate without changing the chemical composition. The VFC, VFS, VFV series of pumps serve you the best in these demanding operations.

## PAPER

In various processes like dosing during pulp preparation, handling pulp in paper making, transferring media like latex, starch and china clay in paper coating, we provide the latest designs to handle these media with ease. Due to reversibility of the pump, cleaning of pumps becomes a very simple task. Further in the process of paper coating our pumps discharge the medium at a steady pressure which enables uniform coating.



## ETP & STP

VISCID FLOW VFBB, VFC, VFM, VFV series of progressive pumps is designed to handle the challenging task of pumping media like raw effluents, primary sludge, digested sludge, dewatered sludge, flocculants and poly electrolytes in ETP and STP applications. These pumps can crush the solids such as wood, polythene waste etc and function as decoking pumps.

## BIO GAS

VISCID FLOW VFV, VFBB series of pumps are specially designed to pump the media in the pre fermentation and post fermentation stages. These special pumps can handle the highly sticky medium with a viscosity of upto 1,000,000 cst.

## CONSTRUCTION

For an array of processes in construction such as plastering, micro concreting, grouting, pumping cementitious slurry etc. VISCID FLOW provides sophisticated pumps to handle the media in these processes. It can handle the highly abrasive medium with hard and angular solids in suspension (upto 20mm) at a very high pressure.

## MINING

In the process of deface watering in coal mines and in pumping the coal slurry, the media contains impurities and solids which make the transfer process very tedious. VISCID FLOW advanced technology and latest solutions make these difficult tasks possible in the most economical way. Commonly used pumps include the VFC and VFM series

## FILTER PRESS

Here at VISCIDFLOW Pumps & Systems, we give you the best solutions for your filtration difficulties. We supply various types of filter press with different stages of automation to best suit your needs. Our filter presses are used in various industry such as Food and Beverages, Biotech and Pharma, Electrocoating, Rubber and latex processing, Textiles, Dying, ETP and STP etc.

## FLUIDS HANDLED

Acids, alkalies, antibiotics, beverages, brine, carbonated water, cologne, cosmetics, dairy, drugs, dye, electro chemicals, effluents, fruit juices, foods, foundry chemicals, gasoline, glycerine, gum, glue, honey, inks, kerosene, lotions, medicines, oils, paraffin, perfumes, photographic solutions, phosphating liquors, Resins, Rubber and latex, sewage treatment, shampoo, syrups, turpentine, urea, varnishes, water etc.



# SINGLE SCREW PUMPS

## VFC/VFS Series

- \* **Construction**
- \* **Casing:** cast iron/ CF8/ CF8M/ monel/ hastelloy
- \* **Rotating parts:** SS304/ SS316/ monel/ hastelloy
- \* **Stator:** Elastomer/ hypalon/ viton/ silicon/ neoprene/ EPDM
- \* **Shaft sealing:** Gland packing/ mechanical sealing
- \* **Universal joint:** Pin & bush/ carbon joint/ gear
- \* **Specification**
- \* **Capacity:** 200 m<sup>3</sup>/hr
- \* **Max Pressure:** 48 bar
- \* **Max Temperature:** 200°C
- \* **Max Viscosity:** 30,000 cst
- \* **User industries:** Oil & Petro chemical, Effluent, Brewery, Ceramics, Chemical, Construction, Cosmetic, Mining, Paper, Paint, Sewage, Sugar, Textiles, etc.,
- \* **Fluids Handled :** Oil sludge, Effluent Sludge, Acids, Acrylic Emulsion, Ceramic, Chemical Slurries, Emulsion, Paints, Magma, Molasses, Oil, Printing Ink, Solvents, Vegetable, Viscose, Yeast, etc.



# VFF Series

## Construction

- \* **Casing:** SS304/ SS316
- \* **Rotating parts:** SS 304/ SS 316
- \* **Stator:** Hygienic rubber/ silicon/ EPDM
- \* **Shaft sealing:** Gland packing/ mechanical sealing
- \* **Universal joint:** Pin & bush
- \* **Specification**
- \* **Capacity:** 100 m<sup>3</sup>/hr
- \* **Max Pressure:** 24 bar
- \* **Max Temperature:** 200°C
- \* **Max Viscosity:** 100,000 cst
- \* **User industries:** Bakery, Brewery, Confectionery, Cosmetics, Dairy, Edible Oil, Food Processing, Fruit Processing, Ice Cream, Malt & Cocoa, Pharmaceuticals, Winery, etc.
- \*
- \* **Fluids Handled:** Apple Pulp, Beer, Beverages, Butter
- \* Oil, Cream, Curd, Edible Gelatine, Fruit Juice, Fruit
- \* Pulp, Glucose, Jam, Medical Formulation, Yeast,
- \* Yoghurt, etc.



## VFW Series (VFW-C/VFWF/VFW-S depending on application)

Provided with **AUGUR** and **CONNECTING ROD** to feed the media into the pump.

- \* **Construction (material selection based on application)**

- \* **Casing:** SS304/ SS316/ CF8/ CF8M/ monel/ hastelloy

- \* **Rotating parts:** Alloy steel/ SS 304/ SS 316

- \* **Stator:** Elastomer/ natural nitrile/ neoprene/ EPDM// hypalon/ viton/ silicon/ hygienic rubber

- \* **Shaft sealing:** Gland packing/ mechanical sealing

- \* **Universal joint:** Pin & bush/ cardon joint/ gear

- \* **Augur:** Alloy steel/ SS304/ SS316

- \* **Specification**

- \* **Capacity:** 100 m<sup>3</sup>/hr

- \* **Max Pressure:** 24 bar

- \* **Max Temperature:** 200°C

- \* **Max Viscosity:** 1,00,0,000 cst

- \* **User industries:** Bakery, Brewery, Confectionery,  
Diary, Edible Oil, Food Processing, Fruit Processing,  
Ice Cream, Malt & Cocoa, Dyestuff, Explosives,  
Meat Processing, Paper & Pulp, Paint & Varnish,  
Soap & Detergent, Sugar, Starch, etc.

- \* **Fluids Handled:** Asbestos slurry, Butter, Cake mix,  
Chyawanprash, Clay Slurry, Explosives Slurry, Fruit or  
Vegetable mash, Lecetin, Putty, Starch slurry, Yoghurt,  
etc.

- \*



# VFG Series

\* We are one of the well reputed Grouting Pumps Manufacturers in India. Our Pumps are manufactured with extremely high precision and accuracy giving our pumps a superior performance as well as better life.

\* **Construction (material selection based on application)**

\* **Casing:** WCB/MS/EN8/EN31

\* **Rotating parts:** Tool steel/ HcHcr/D2/OHNS

\* **Stator:** Natural rubber

\* **Shaft sealing:** Gland packing/ mechanical sealing

\* **Universal joint:** Pin & bush/ cardon joint/ gear

\* **Augur:** Alloy steel/ SS410/EN19

\* **Specification**

\* **Capacity:** 100 m<sup>3</sup>/hr

\* **Max Pressure:** 24 bar

\* **Max Temperature:** 200°C

\* **Max Viscosity:** 1,00,0,000 cst

\* **User industries:** Civil construction works, Concrete mixing, Mining construction, Wall & Seal plastering, Cement grouting, self leveling underlayment's, some repair mortars, plaster, fireproofing and most packaged grout mixes, heavily sanded grouts, and repair mortars etc.

\* **Fluids Handled:** Cement Slurry, Cement chemicals,

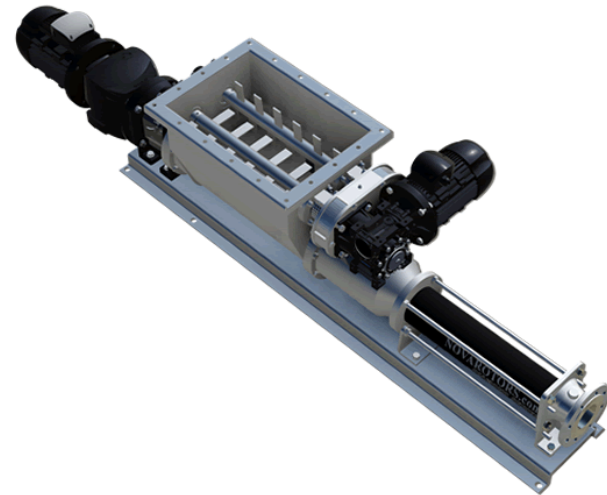
Cement chips, Grout mixing, Concrete mixing, Neat cement, bentonite, cement/bentonite, ultrafine cements, cement/sand, non-shrink grouts, metallic grouts Etc.



## VFBB Series (VFBB-C/VFBB-F/VFBB-S depending on application)

Provided with **BRIDGE BREAKER** to feed the solid cake into the rotor stator combination.

- \* **Construction (material selection based on application)**
- \* **Casing:** SS304/ SS316/ CF8/ CF8M/ monel/ hastelloy
- \* **Rotating parts:** Alloy steel/ SS 304/ SS 316
- \* **Stator:** Elastomer/ natural nitrile/ neoprene/ EPDM// hypalon/ viton/ silicon/ hygienic rubber
- \* **Shaft sealing:** Gland packing/ mechanical sealing
- \* **Universal joint:** Pin & bush/ carbon joint/ gear
- \* **Bridge Breaker:** MS/ SS304/ SS316
- \* **Specification**
- \* **Capacity:** 100 m<sup>3</sup>/hr
- \* **Max Pressure:** 24 bar
- \* **Max Temperature:** 200°C
- \* **Max Viscosity:** 1,00,0,000 cst
- \* **User industries:** Bakery, Brewery, Confectionery, Chemicals, Food Processing, Fruit Processing, Meat Processing, Starch, etc.
- \* **Fluids Handled:** Cake mix, Dough, Cheese, Mash, Paper Pulp, Grout With Gravel, etc.



# VFV/VFB Series (vertical and barrel pumps)

- \* **Construction**

- \* **Casing:** SS304/ SS316/ CF8/ CF8M/ monel/ hastelloy

- \* **Rotating parts:** Alloy steel/ SS 304/ SS 316

- \* **Stator:** Elastomer/ natural nitrile/ neoprene/ EPDM// hypalon/ viton/ silicon/ hygienic rubber

- \* **Shaft sealing:** Gland packing/ mechanical sealing

- \* **Universal joint:** Pin & bush/ carbon joint/ gear

- \* **Specification**

- \* **Capacity:** 100 m<sup>3</sup>/hr

- \* **Max Pressure:** 24 bar

- \* **Max Temperature:** 200°C

- \* **Max Viscosity:** 1,00,0,000 cst

- \* **User industries:** Brewery, Chemicals, Automobile,

- \* Food Processing, Malts & Coca, Paints & Dyes,

- \* Pharmaceuticals, etc.

- \* **Fluids Handled:** Beer, Fruit Pulp, Hot Chocolate,

- \* Liquid Soap, Grease, Putty, Glucose, Drug

- \* Formulations, Syrup, Lubricating Oil, Furnace Oil,

- \* Paint, etc.



# VFM Series

- \* **Construction**

- \* An integral motor base eliminates the requirement of base plate. Motor placed above bearing housing and driven by V-pulleys reducing space requirement.

- \* **Casing:** cast iron

- \* **Rotating parts:** Alloy steel/ SS 304/ SS 316

- \* **Stator:** Elastomer/ natural nitrile/ neoprene/ EPDM

- \* **Shaft sealing:** Gland packing/ mechanical sealing

- \* **Universal joint:** Pin & bush/ carbon joint/ gear

- \* **Specification**

- \* **Capacity:** 60 m<sup>3</sup>/hr

- \* **Max Pressure:** 6 bar

- \* **Max Temperature:** 200°C

- \* **Max Viscosity:** 100,000 cst

- \* **User industries:** Coal mines, Construction, Cosmetics, Detergent, Distillers, Dyestuff, Effluents, Edible Oil, Fertilizer, Marine, Paper, Paints, Printing Ink, etc.

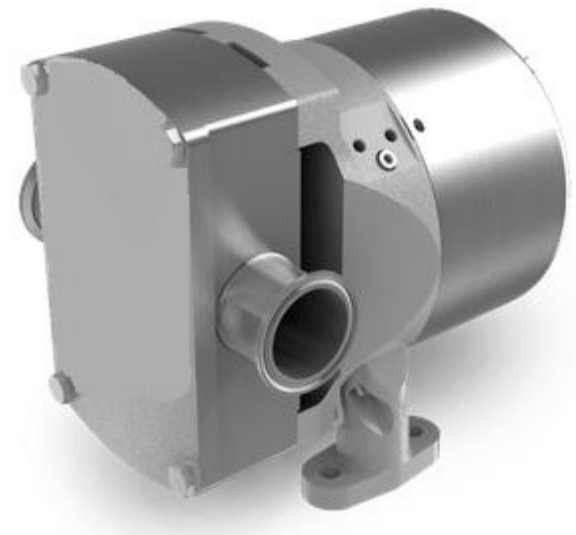
- \* **Fluids Handled:** Acids or Alkaline, Ceramic slurry, Chemical Slurry, Cosmetics, Distillery, Dyestuff, Magma, Molasses, Oil, Paint, Printing ink, etc.



# LOBE PUMPS

## VFL series

- \* **Construction**
- \* **Material:** SS 316
- \* **Mechanical seal:** Single and double
- \* **Mounting:** vertical/horizontal
- \* **Gasket material:** FKM/ NBR/ EPDM/ FPM
- \* **Specifications**
- \* **Max capacity:** 16 m<sup>3</sup>/hr
- \* **Max pressure:** 10 bar
- \* **Max viscosity:** 100,000 cst
- \* **Max temperature:** 150°C
- \* **User industries:** chemicals, cosmetics, distilleries,  
Edible oil, Food processing, paper coating,  
Pharmaceuticals, winery, etc.
- \* **Fluids Handled:** Alcohol, Brine, butter fat, Cheese  
Whey, chocolate, Fruit juice & pulp, Gelatin, Lotions,  
Molasses, starch, wines, vinegar, etc.



# Filter press

## **Recessed plate filter press (centre feed)**

Consists of polypropylene squares with depression and hole at the centre.

Media is pressurized between the two plates and filtrate is squeezed out through the filter cloth in lining chamber.

Most Suited for easy settling solutions.

## \* **Plate and frame filter press (corner feed)**

- \* Consists of several plates and frames supported by rails.
- \* Filter press pump delivers suspension into each of the separating chamber and ensures suspended solids don't settle in system.
- \* Most suited for slimy and biological suspensions.

## \* **Automatic filter press**

- \* Working same as manual pate and frame filter press but entire process is automated.
- \* Plate shifter enables easy movement of plates and allows rapid discharge of filter cakes accumulated between the plates.
- \* Diaphragm compressor optimizes the operation by further drying the cakes.

## \* **SS filter press**

- \* Fully stainless steel filters are required in food, pharma and brewery industries.
- \* All contact parts of Poly Propylene or SS 304/316/316L
- \* All accessories such as nuts, bolts, fittings, hose pipes, nozzles and flanges completely SS 304/316/316L grade



# Filter press

## Filter Plates

### Construction

**Material:** Polypropylene (PP)/ stainless steel (SS)/ cast iron (CI) / phosphor bronze (PB) (depending on application)

**Shape:** Square/ round plates

### Specification

Filtration area and cake holding volume chart for recessed and frame type filter presses

Size	No. of Frames	Thick in mm.	Cake Vol. in liters	Area Sq.m.
355mm(14")	6	30	15.3	1.02
	8	30	20.4	1.36
	12	30	30.6	2.04
480mm(18")	8	35	34.66	2.31
	10	35	43.32	2.89
	14	35	60.65	4.04
	20	35	86.64	5.78
	24	35	103.97	6.93
610 mm (24")	14	35	127.05	8.500
	20	35	181.50	12.140
	24	35	217.80	14.570
	30	35	272.25	18.220



**VISCID FLOW** Pumps & Systems

**Address :**

No 3/19a KPG Nagar,  
Sulur PO, Coimbatore – 641402.

**Mob** : +91 8754324697  
+91 8903356585  
+91 9789027651

**Whatsapp** : +91 8754324697  
+91 8903356585  
+91 9789027651

**Email** : enquiryviscidflow@gmail.com  
salesviscidflow@gmail.com

**Web** : [www.viscidflow.com](http://www.viscidflow.com)